



Style: 4116

Badger Ladies' 5" B-Dry Core Short



Description:

Athletic performance and aggressive promotions.

Sizes: XS-2XL

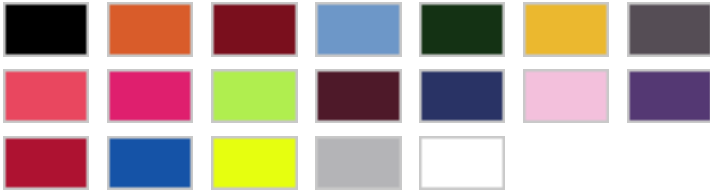
Key Features:

- 100% polyester
- Moisture-management performance fabric
- 5" inseam
- Double-needle hem
- 1 1/2" covered elastic and draw cord
- Badger heat sealed logo on left hip

XS-2XL: Black, Burnt Orange, Cardinal, Columbia Blue, Forest Green, Gold, Graphite, Hot Coral, Hot Pink, Lime, Maroon, Navy, Pink, Purple, Red, Royal, Safety Yellow, Silver, White

Care Instructions:

Machine wash cold with like colors. Do not bleach. Tumble dry low. Do not iron



Product Specifications

Size	Inseam	Waist
XS	5	22
S	5	24
M	5	26
L	5	28
XL	5	30
2XL	5	32