



Sport-Tek® Ladies Sport-Wick® Stretch 1/2-Zip Pullover LST850



An extremely flexible layer with a soft-brushed backing and moisture control for year-round comfort.

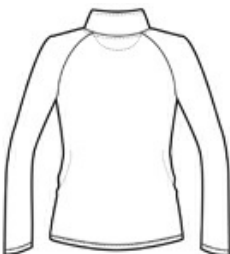
- 6.8-ounce, 90/10 poly/spandex
- Tag-free label
- Gently contoured silhouette
- Chin guard eliminates skin irritation
- Cadet collar
- Raglan sleeves
- Thumbholes to keep hands warm
- Hidden front pouch pocket
- Open cuffs and hem

**Due to the nature of 100% polyester performance fabrics, special care must be taken throughout the screen printing process.*

CARE INSTRUCTIONS



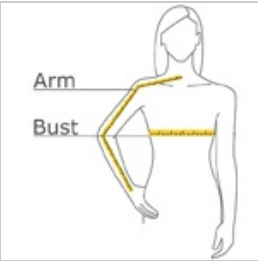
front



back

[Tips For Effectively Screen Printing Polyester Fabrics](#)

HOW TO MEASURE








BUST
With arms down at sides, measure around the upper body, under arms and around the fullest part of the bust.

ARM
Place hand on hip. Start at the center of the back of the neck and measure across the shoulder, to the elbow, and then down to the wrist.

SIZE CHART

	XS	S	M	L	XL	XXL	3XL	4XL
Chest	32-34	35-37	38-40	41-43	44-46	47-49	50-53	54-57
Arm	30-30 3/4	30 3/4-31 1/2	31 1/2-32	32-32 1/2	32 1/2-33	33-33 3/8	33 3/8-33 3/4	33 3/4-34 1/2
Size	2	4/6	8/10	12/14	16/18	20/22	24/26	28/30

COLOR INFORMATION

							
Black PMS 426 C	Charcoal Grey PMS 7540 C	Dusty Rose PMS 702 C	Iris Purple PMS 7673 C	Pink Rush PMS 7435 C	True Navy PMS 533 C	True Royal PMS 7687 C	White PMS WHITE